

71 ROUTE 46

MOUNT OLIVE, NEW JERSEY

FULLY APPROVED - UP TO 27,000 SF

STEVE BATTISTA

sbattista@jefferyrealty.com

C: 908.963.4539

O: 908.668.9600



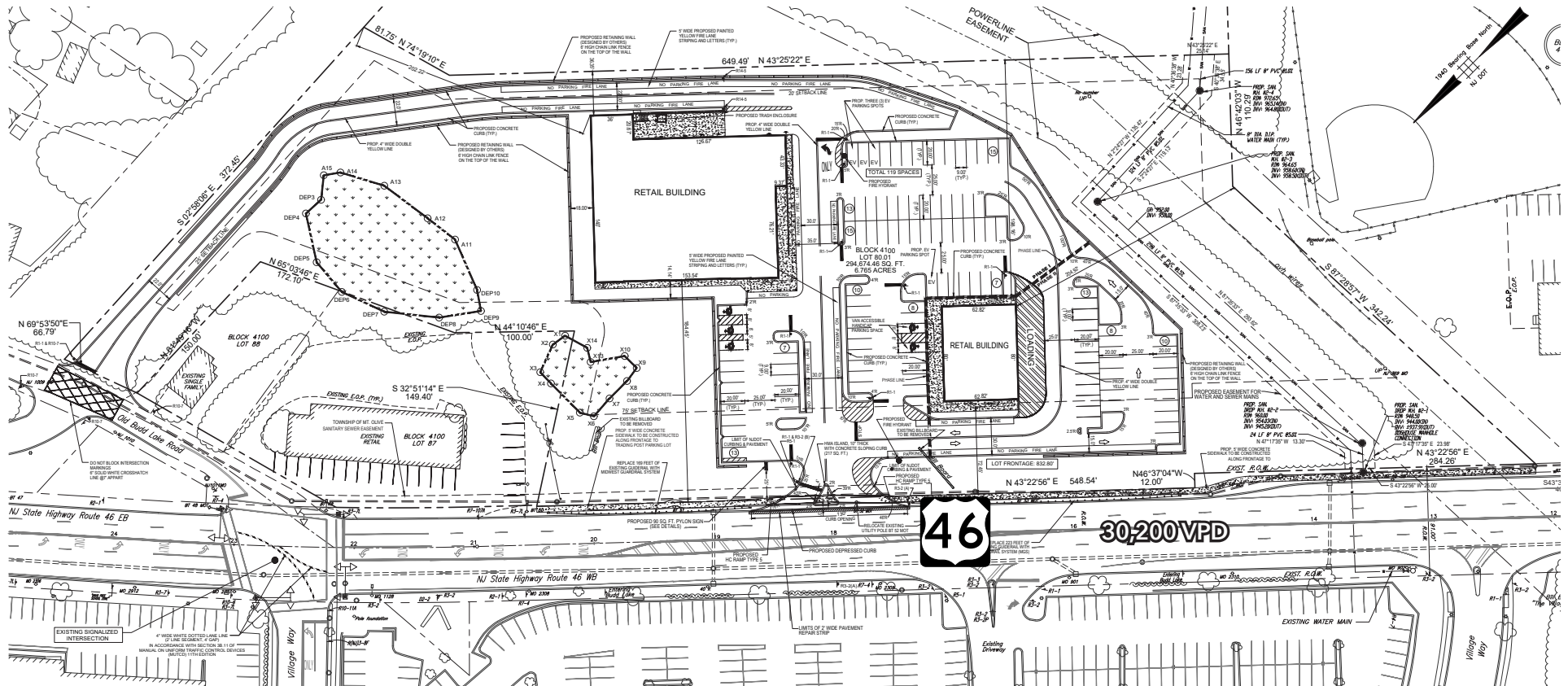
71 ROUTE 46

MOUNT OLIVE, NEW JERSEY

SITE INFORMATION

BUILDING SIZE: 2,000 SF - 27,000 SF
AVERAGE: 6.75 Acres
ASKING: Call for Quote
PARKING: 119 spaces
FRONTAGE: 584' on Route 46

- NOTES:**
- Fully approved for 27,000 SF
 - Full access to traffic light on Route 46 and Old Budd Lake Road
 - Pylon signage proposed



JEFFERY REALTY
Retail Specialist

52 Millburn Ave. • Springfield, NJ 07081 • T: 908.668.9600 • F: 908.662.5225 • www.JefferyRealty.com

All information is from sources deemed reliable and is submitted subject to errors, omissions, change of price, terms, prior sales and withdrawals.



71 ROUTE 46

MOUNT OLIVE, NEW JERSEY

 **SITE PHOTOS**



71 ROUTE 46

MOUNT OLIVE, NEW JERSEY

