

431 COUNTY ROAD 513

CALIFON, NEW JERSEY

**FOR LEASE | 4,000 SF FORMER BANK END CAP
W/ DRIVE-THRU**

KYLE GOWOREK

kgoworek@jefferyrealty.com

C: 201.978.1770

O: 908.668.9600 x218

SHANE WIERKS

swierks@jefferyrealty.com

C: 908.581.7781

O: 908.668.9600 x209



JEFFERY REALTY
Retail Specialist

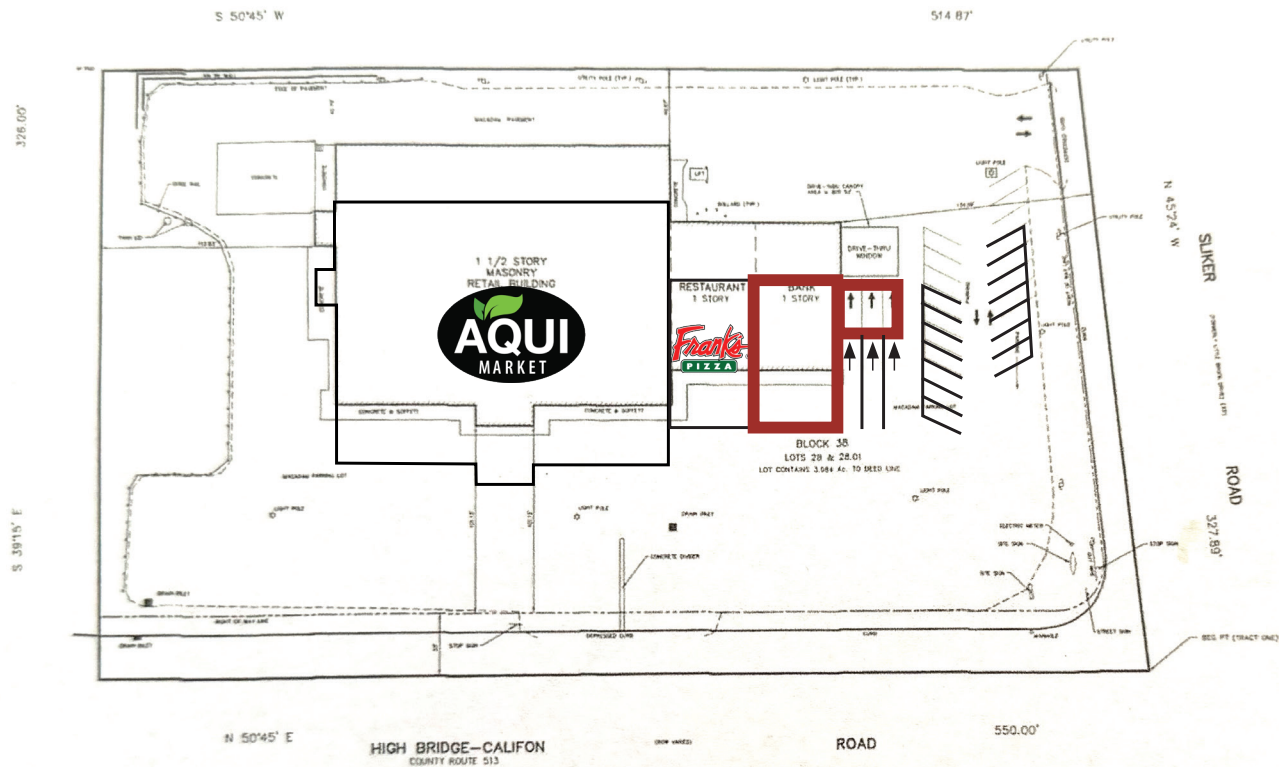
52 Millburn Ave. • Springfield, NJ 07081 • T: 908.668.9600 • F: 908.662.5225 • www.JefferyRealty.com

All information is from sources deemed reliable and is submitted subject to errors, omissions, change of price, terms, prior sales and withdrawals.



431 COUNTY ROAD 513 CALIFON, NEW JERSEY

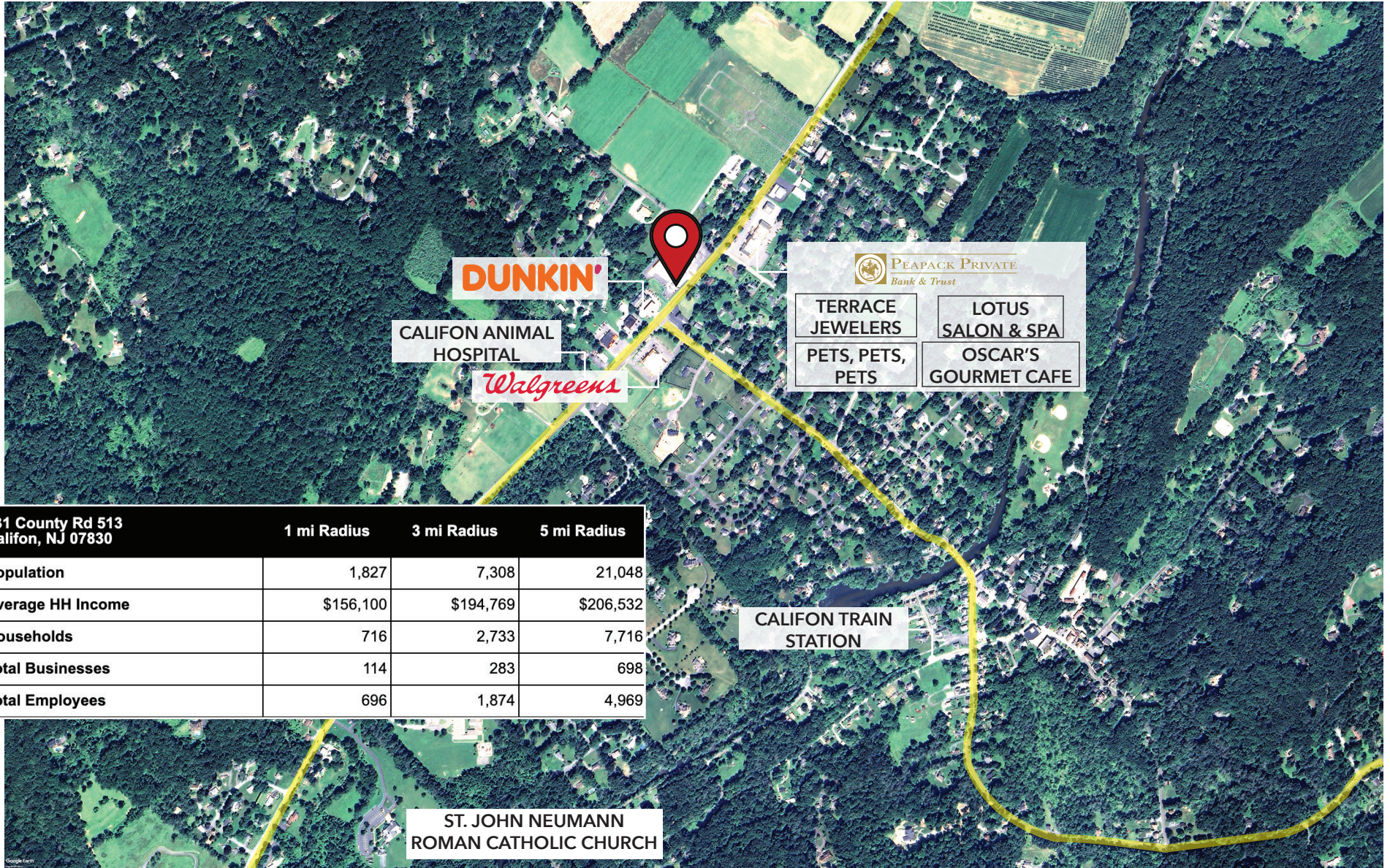
SITE INFORMATION



BUILDING SIZE: 34,000 SF
AVAILABLE SIZE: 4,000 SF end cap w/ drive-thru
ASKING: Call for Quote
2024 TAXES: \$71,998.14
PARKING: ~150 spaces
FRONTAGE: 550' feet on County Road 513
NOTES: former bank

431 COUNTY ROAD 513

CALIFON, NEW JERSEY



431 County Rd 513 Califon, NJ 07830	1 mi Radius	3 mi Radius	5 mi Radius
Population	1,827	7,308	21,048
Average HH Income	\$156,100	\$194,769	\$206,532
Households	716	2,733	7,716
Total Businesses	114	283	698
Total Employees	696	1,874	4,969



JEFFERY REALTY
Retail Specialist

52 Millburn Ave. • Springfield, NJ 07081 • T: 908.668.9600 • F: 908.662.5225 • www.JefferyRealty.com

All information is from sources deemed reliable and is submitted subject to errors, omissions, change of price, terms, prior sales and withdrawals.



431 COUNTY ROAD 513

CALIFON, NEW JERSEY

SITE PHOTOS

