

1887 MORRIS AVENUE UNION, NEW JERSEY

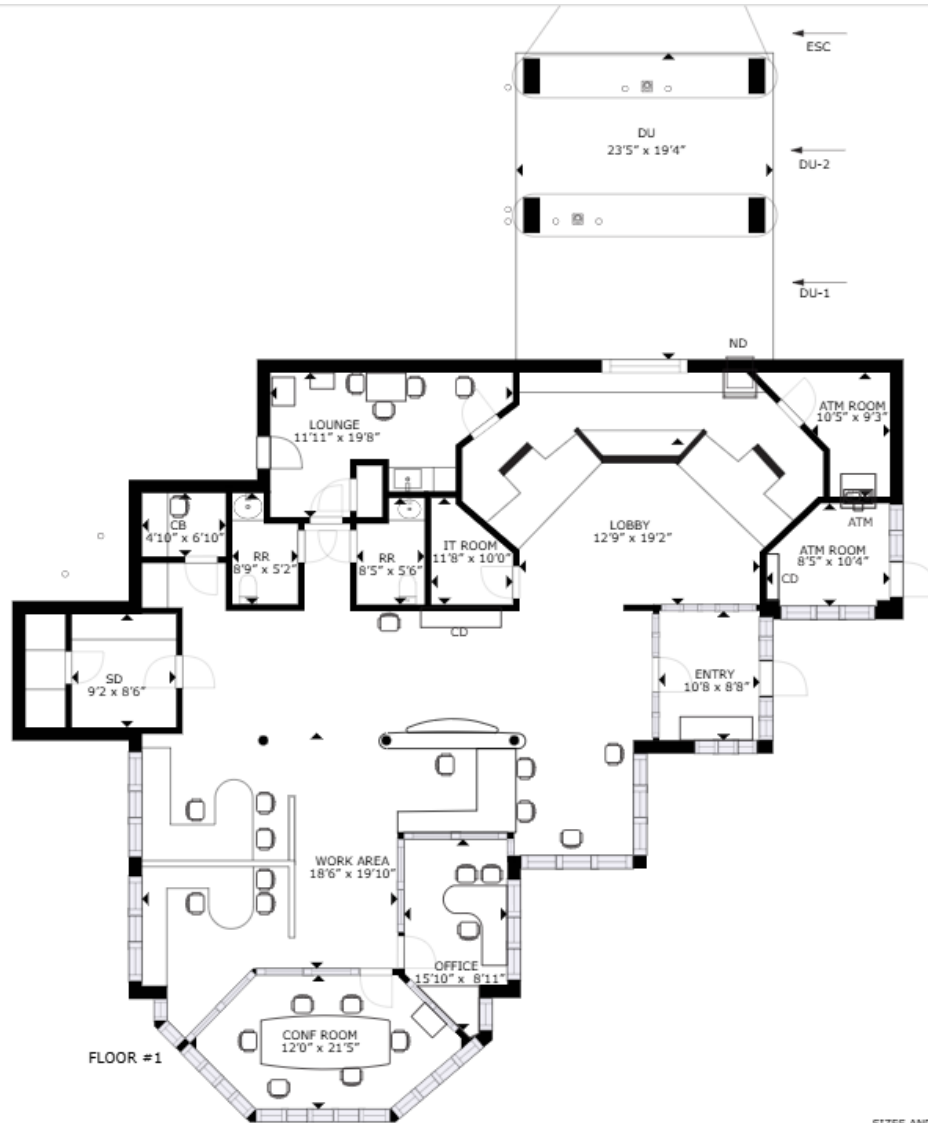
2,622 SF Free-Standing Building w/ Drive-Thru

SHANE WIERKS
swierks@jefferyrealty.com
C: 908.581.7781
O: 908.668.9600



1887 MORRIS AVENUE UNION, NEW JERSEY

SITE INFORMATION



BUILDING SIZE: 2,622 SF former bank with double drive-thru lanes

ASKING: Call for Quote

2024 TAXES: \$46,154.82

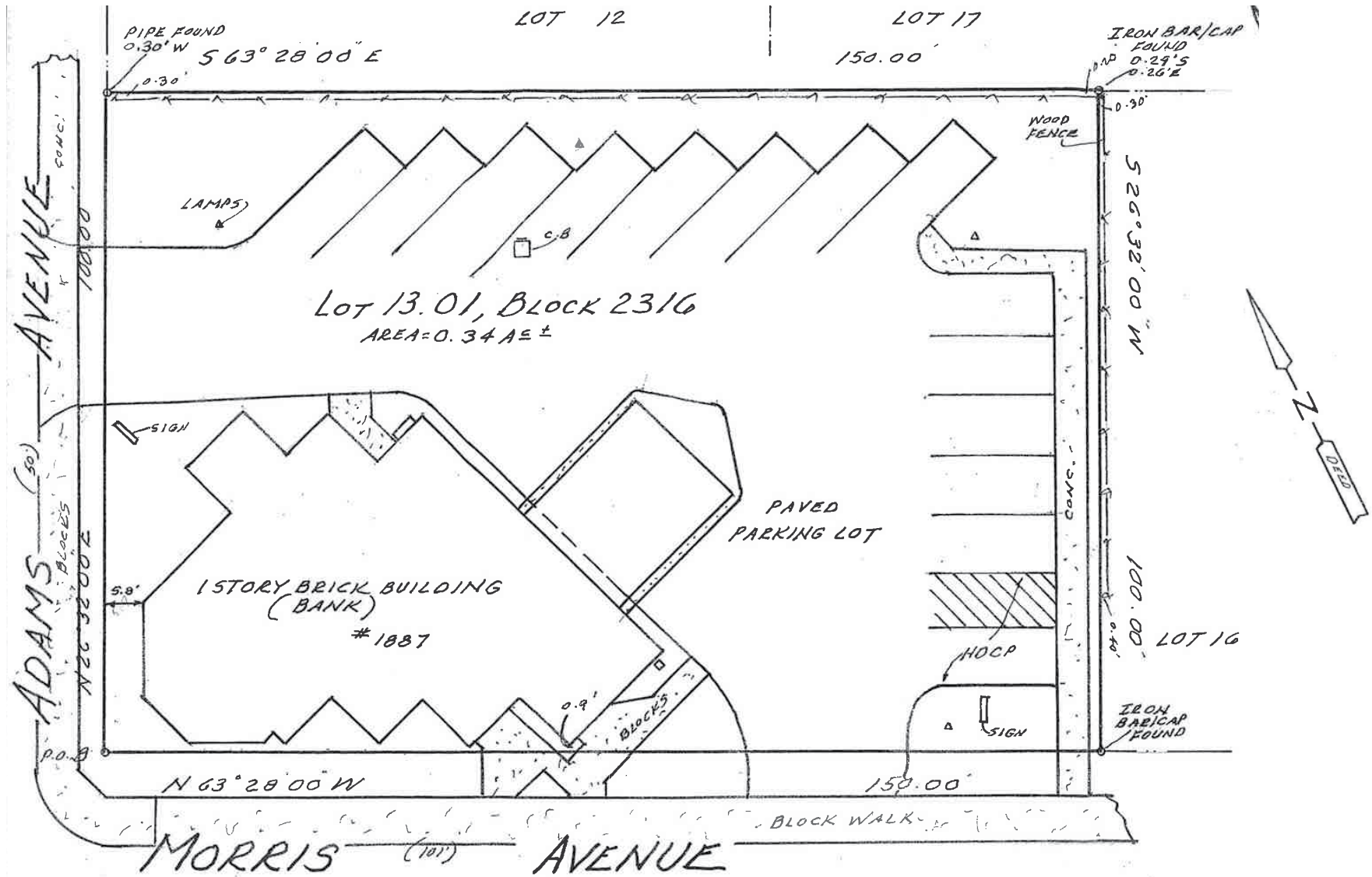
PARKING: 14 spaces

FRONTAGE: 101 feet on Morris Avenue

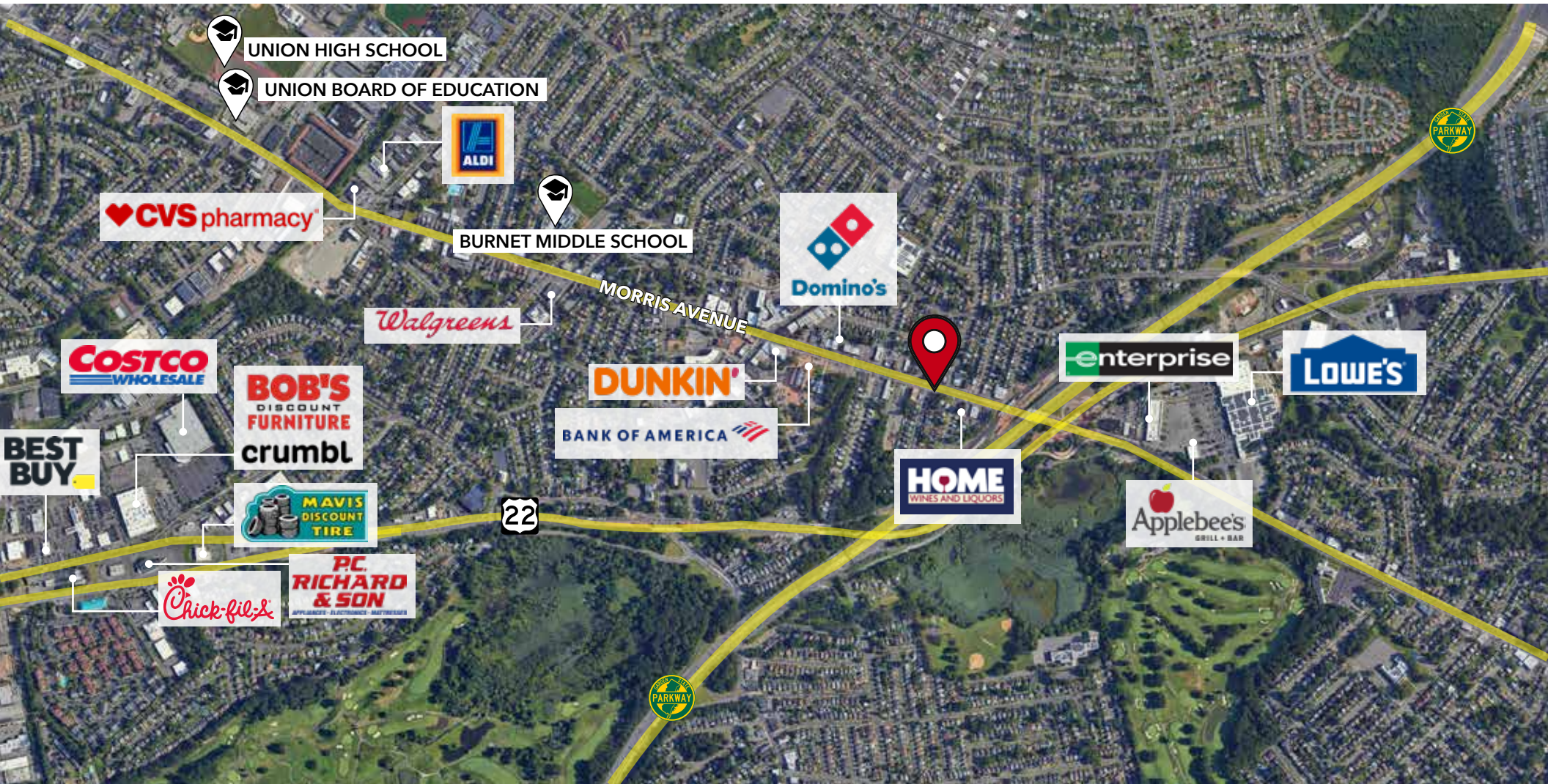
NOTES: former Flag Star Bank

GROSS INTERNAL AREA
FLOOR PLAN: 2,622 sq. ft.
EXCLUDED AREA: PATIO: 525 sq. ft.
SIZES AND DIMENSIONS ARE APPROXIMATE, ACTUAL MAY VARY.

1887 MORRIS AVENUE UNION, NEW JERSEY



1887 MORRIS AVENUE UNION, NEW JERSEY



1887 MORRIS AVENUE UNION, NEW JERSEY

SITE PHOTOS

