

900 SOMERSET STREET
WATCHUNG, NEW JERSEY

2,800 SF FOR LEASE

PROPOSED PAD SITE W/ DRIVE THRU

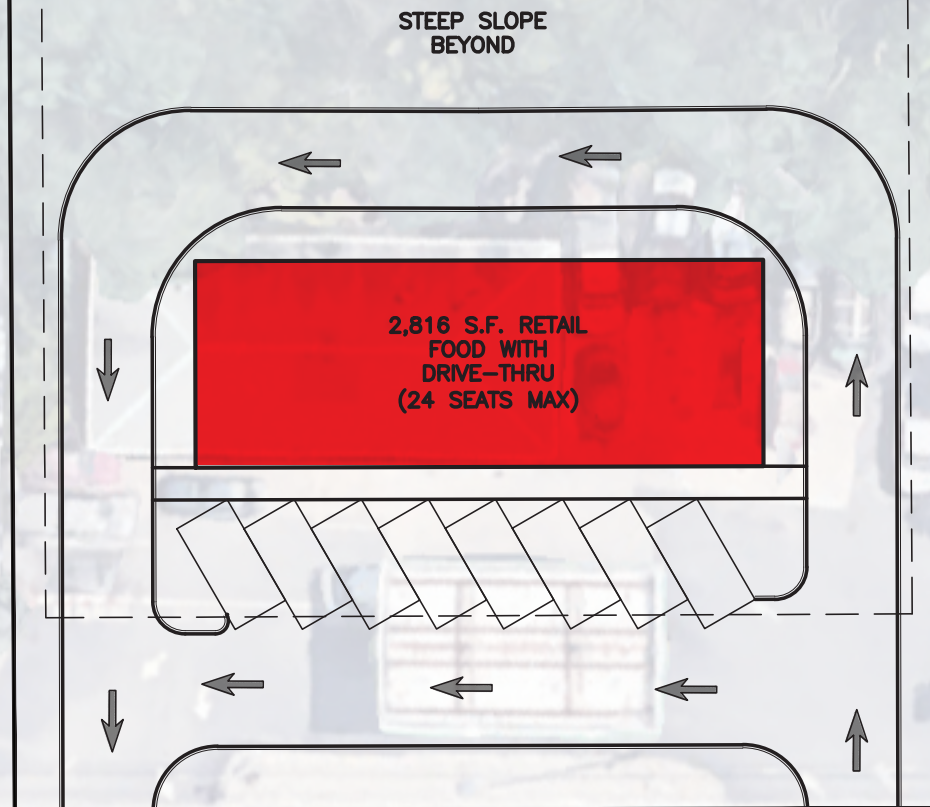
STEVE BATTISTA
sbattista@jefferyrealty.com
C: 908.963.4539
O: 908.668.9600 x203



JEFFERY REALTY
Retail Specialist

52 Millburn Ave. • Springfield, NJ 07081 • T: 908.668.9600 • F: 908.668.5225 • www.JefferyRealty.com
All information is from sources deemed reliable and is submitted subject to errors, omissions, change of price, terms, prior sales and withdrawals.





SOMERSET STREET 16,911 VPD

900 SOMERSET ST. WATCHUNG, NEW JERSEY

SITE INFORMATION

ACREAGE: 1.5 AC

AVAILABLE: .30 AC USABLE

2,800 SF W/
DRIVE THRU

RENT: CALL FOR QUOTE

PARKING: 8 SPACES

TAXES: EST. \$13,200 (2023)

TRAFFIC: 16,911 VPD

NOTES: • Ground Lease Opportunity

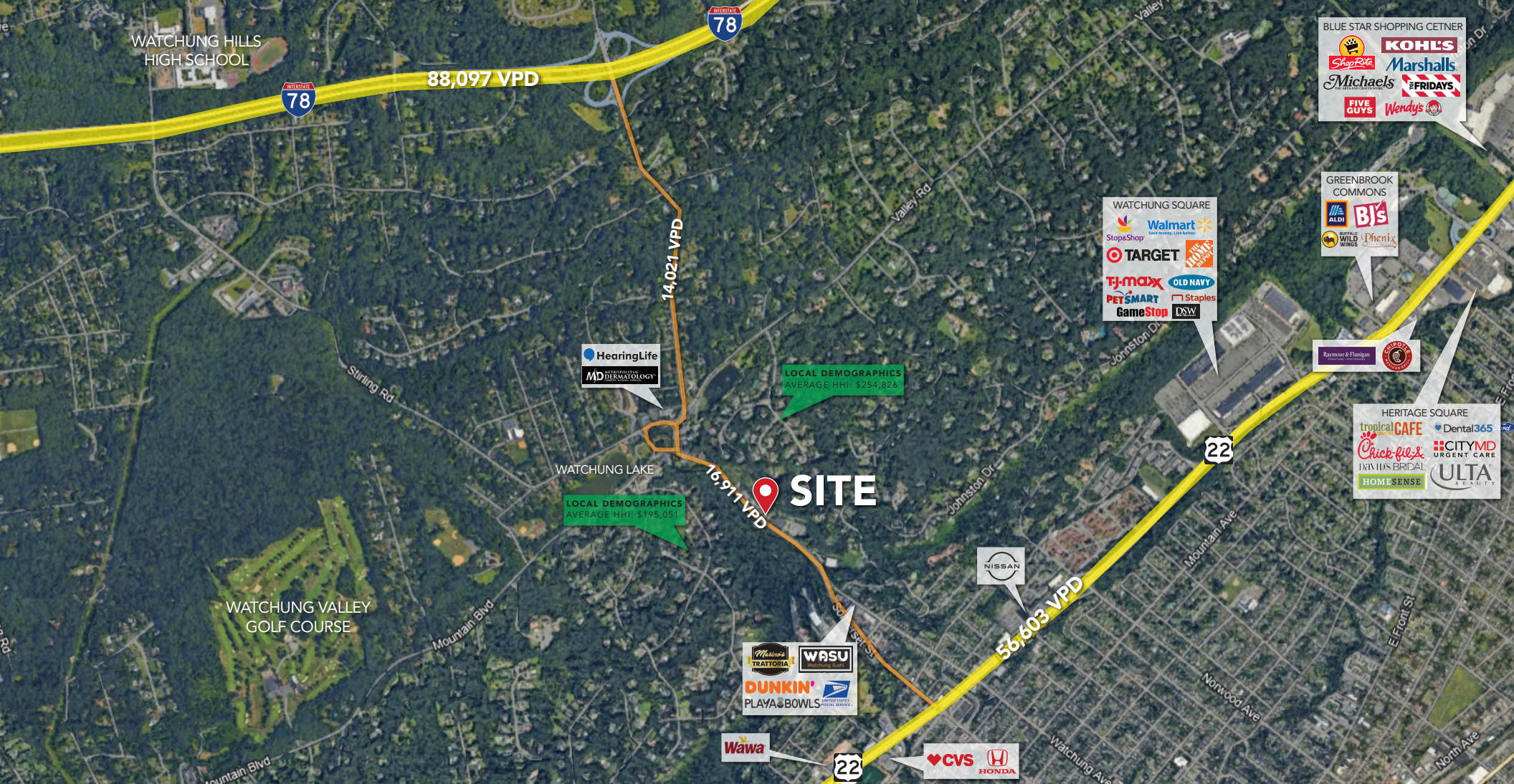
Located on a busy County Road 531
between Route 22 and Route 78



JEFFERY REALTY
Retail Specialist

52 Millburn Ave. • Springfield, NJ 07081 • T: 908.668.9600 • F: 908.668.5225 • www.JefferyRealty.com
All information is from sources deemed reliable and is submitted subject to errors, omissions, change of price, terms, prior sales and withdrawals.





900 SOMERSET ST. WATCHUNG, NEW JERSEY

LOCAL ACCESS



DEMOGRAPHICS	1 MILE	3 MILE	5 MILE
Total Population	7,935	107,790	234,322
Average HHI	\$121,597	\$141,370	\$181,712
Households	3,259	35,083	80,188



900 SOMERSET ST. WATCHUNG, NEW JERSEY

MARKET AERIAL



JEFFERY REALTY
Retail Specialist

52 Millburn Ave. • Springfield, NJ 07081 • T: 908.668.9600 • F: 908.668.5225 • www.JefferyRealty.com

All information is from sources deemed reliable and is submitted subject to errors, omissions, change of price, terms, prior sales and withdrawals.

