

**17-19 BEECHWOOD RD.**  
SUMMIT, NEW JERSEY

**FOR LEASE 1,500 SF 2<sup>ND</sup> FLOOR**

**KYLE GOWOREK**

kgoworek@jefferyrealty.com

C: 201.978.1770

O: 908.668.9600 x218

**SHANE WIERKS**

swierks@jefferyrealty.com

C: 908.581.7781

O: 908.668.9600 x209



**JEFFERY REALTY**  
Retail Specialist

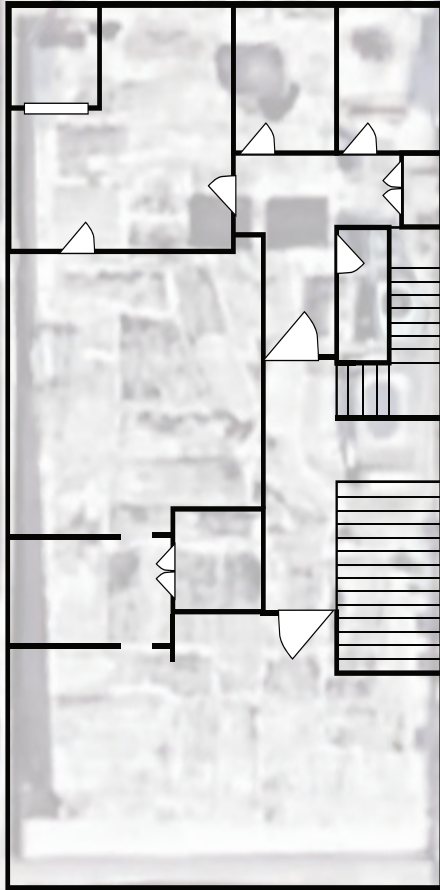
52 Millburn Ave. • Springfield, NJ 07081 • T: 908.668.9600 • F: 908.668.5225 • [www.JefferyRealty.com](http://www.JefferyRealty.com)

All information is from sources deemed reliable and is submitted subject to errors, omissions, change of price, terms, prior sales and withdrawals.





## FLOOR PLAN



## 12 BANK STREET SUMMIT, NEW JERSEY

## SITE INFORMATION

**BUILDING:** 5,000 SF MIXED USE

**RENT:** CALL FOR QUOTE

**NOTES:** • Sublet opportunity located above Boxwood Coffee

**AVAILABLE:** 1,500 SF (OFFICE 2ND FLOOR)

**FRONTAGE:** 28' ON BEECHWOOD

**PARKING:** STREET PARKING +  
MUNICIPAL LOT



**JEFFERY REALTY**  
Retail Specialist

52 Millburn Ave. • Springfield, NJ 07081 • T: 908.668.9600 • F: 908.668.5225 • [www.JefferyRealty.com](http://www.JefferyRealty.com)

All information is from sources deemed reliable and is submitted subject to errors, omissions, change of price, terms, prior sales and withdrawals.







**17-19 BEECHWOOD RD.** SUMMIT, NEW JERSEY

**INTERIOR PHOTOS**



**JEFFERY REALTY**  
Retail Specialist

52 Millburn Ave. • Springfield, NJ 07081 • T: 908.668.9600 • F: 908.668.5225 • [www.JefferyRealty.com](http://www.JefferyRealty.com)

All information is from sources deemed reliable and is submitted subject to errors, omissions, change of price, terms, prior sales and withdrawals.







**17-19 BEECHWOOD RD. SUMMIT, NEW JERSEY**

**MARKET AERIAL**