



**HIGHWAY FRONTING
JR. ANCHOR SPACE
AVAILABLE**

**3,207 SF
AVAILABLE**

**24,627 SF
AVAILABLE**

**3,276 SF
AVAILABLE**

**ROUTE 35
44,840 VPD**

NORTH SOUTH

COMMONS WAY

ROUTE 35 & LAUREL AVE.
HOLMDEL, NEW JERSEY
COMMONS AT HOLMDEL

FOR LEASE 3,207 SF - 24,627 SF

MIKE TESTA
mtesta@jefferyrealty.com
C: 201.232.6086
O: 908.668.9600

MATTHEW KENDERIAN
mkenderian@jefferyrealty.com
C: 732.547.8090
O: 908.668.9600



TENANTS	SF
1 Best Buy	30,109
2 Barnes & Noble	18,000
3 Old Navy	18,265
4 Ulta	11,825
5 Wine Outlet	9,480
6 Kinya Sushi/Ugly Dumping	3,060
7 Bath & Body Works	3,960
8 Amanda's Hallmark	3,954
9 Proposed Grocer	37,500
10 Michaels	25,482
11 Holmdel Nails	3,557
12 Lane Bryant	5,037
13 J. Crew Factory	4,980
14 AVAILABLE	3,207
15-16 Patricia's of Holmdel	6,146
17 The Turning Point	3,272
18 AVAILABLE	24,627
19 Houlihan's	6,480
20 Crumbl Cookies	1,550
21 AVAILABLE	3,276
22 Vitamin Shoppe	4,250
23 Its Greek to Me	2,899
24 LensCrafters	3,675

COMMONS AT HOLMDEL

HOLMDEL, NJ

SITE INFORMATION

GLA: 235,657 SF

PARKING: 1,200 SPACES

NOTES: • EASY ACCESS FROM RT. 36 & GSP

AVAILABLE: UP TO 24,627 SF

FRONTAGE: 1,849' ON RT. 35

• JOIN NATIONAL RETAILERS ALONG THE

RENT: CALL FOR QUOTE

TRAFFIC: 44,840 VPD RT. 35

RT. 35 CORRIDOR



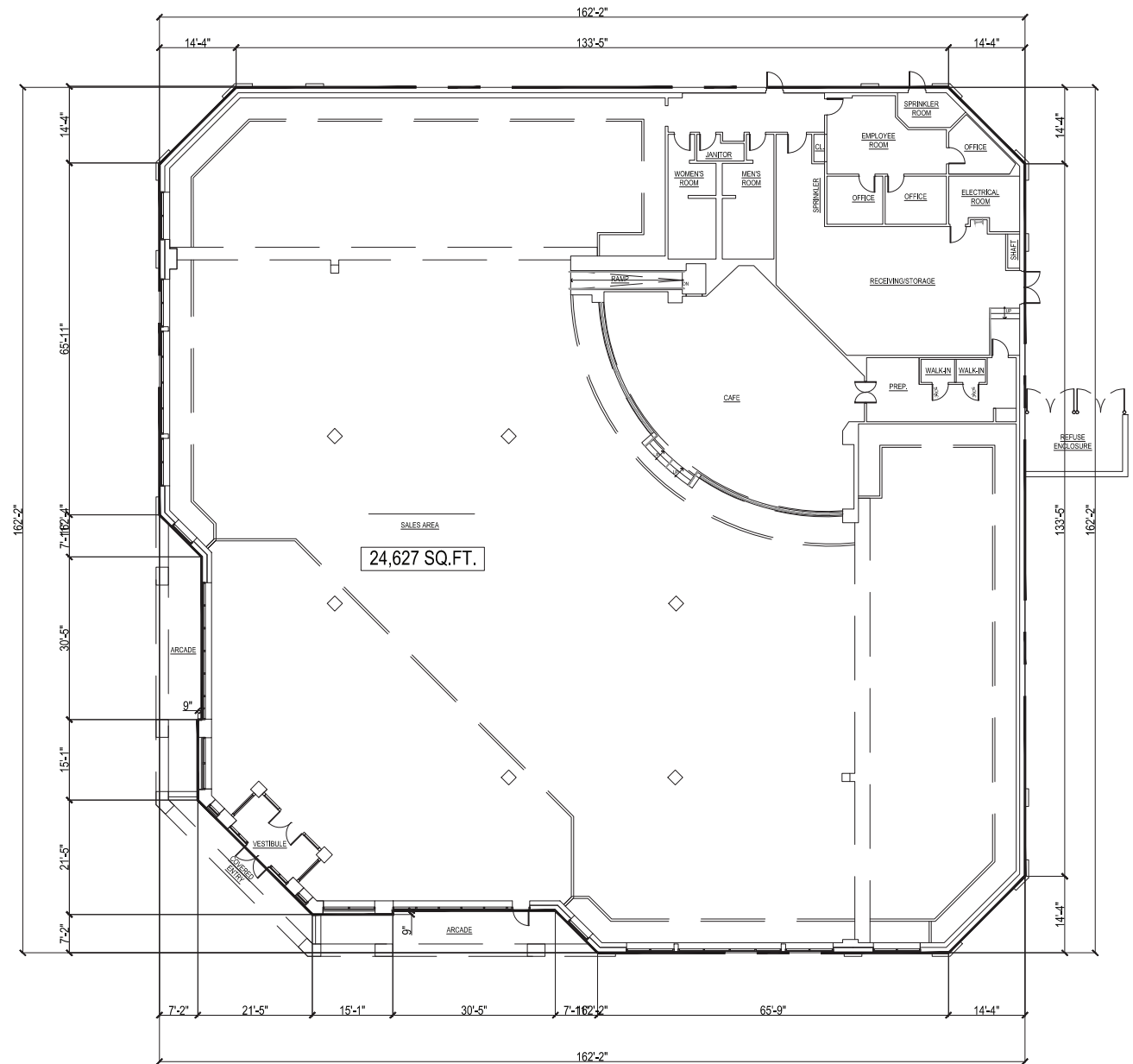
JEFFERY REALTY
Retail Specialist

52 Millburn Ave. • Springfield, NJ 07081 • T: 908.668.9600 • F: 908.668.5225 • www.JefferyRealty.com

All information is from sources deemed reliable and is submitted subject to errors, omissions, change of price, terms, prior sales and withdrawals.



SPACE 18
24,627 SF



COMMONS AT HOLMDEL

HOLMDEL, NJ

JUNIOR ANCHOR



JEFFERY REALTY
Retail Specialist

52 Millburn Ave. • Springfield, NJ 07081 • T: 908.668.9600 • F: 908.668.5225 • www.JefferyRealty.com
All information is from sources deemed reliable and is submitted subject to errors, omissions, change of price, terms, prior sales and withdrawals.





COMMONS AT HOLMDEL

HOLMDEL, NJ

SITE PHOTOS



COMMONS AT HOLMDEL

HOLMDEL, NJ

MARKET AERIAL

DEMOGRAPHICS	1 MILE	3 MILE	5 MILE
Population	5,546	65,222	137,880
Average Income	\$137,354	\$149,942	\$144,117
Median Income	\$115,232	\$116,130	\$111,642
Total Employees	2,567	19,797	54,045
Daytime Pop. (16+)	4,499	41,646	100,300